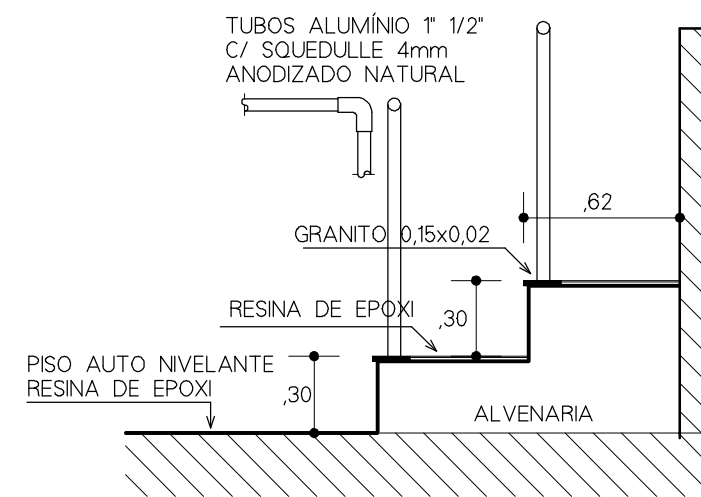


1 P6 A P13  
ESCALA 1:20

2 P1 A P4  
ESCALA 1:20

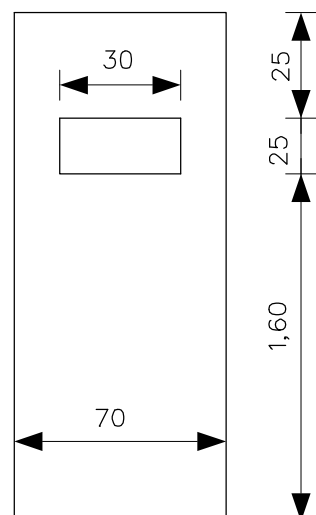
3 P7  
ESCALA 1:20



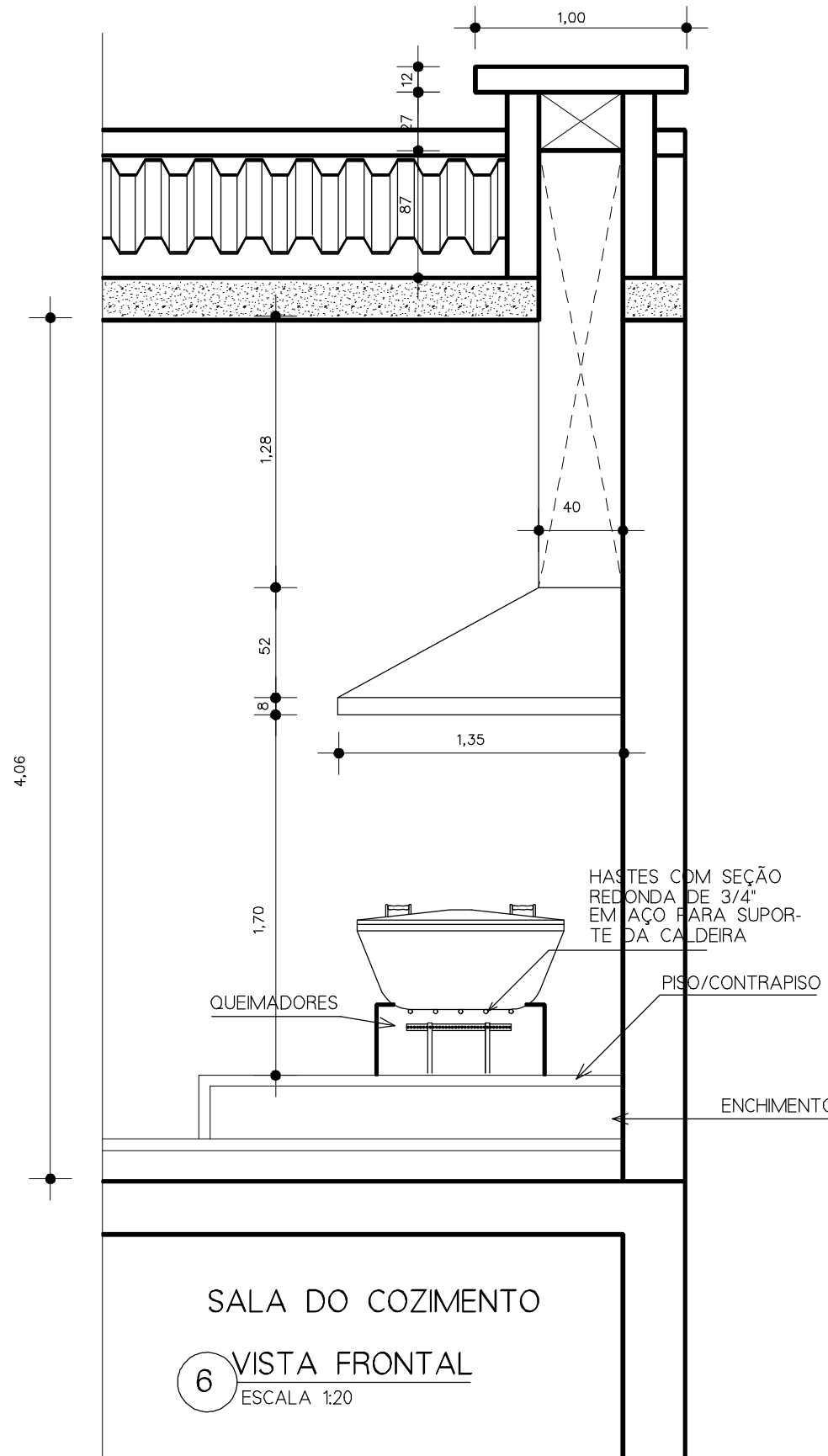
4 DET. ARQUIB.  
ESCALA 1:20



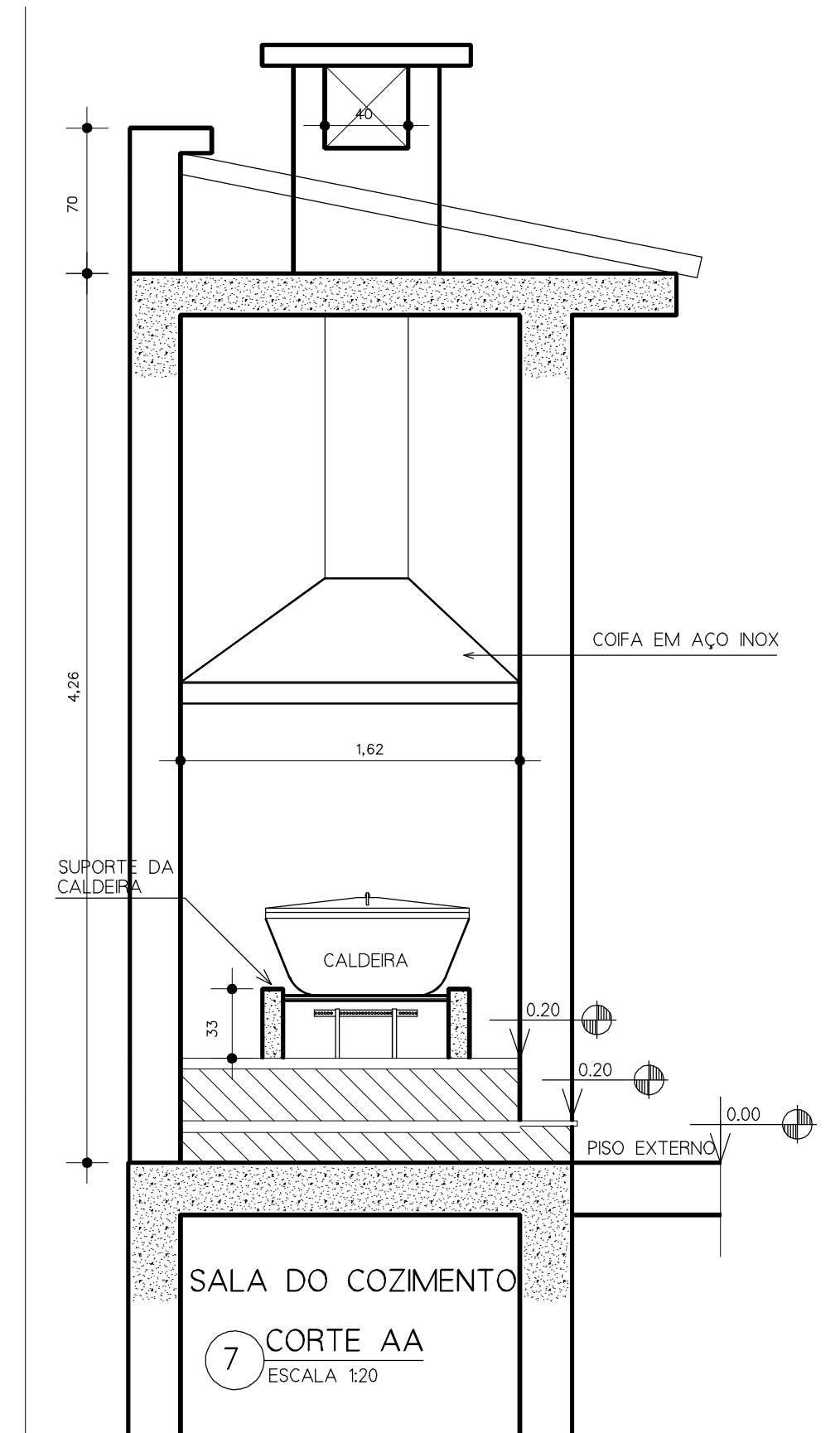
5 VENT. DEP. 1  
ESCALA 1:20



11 P5  
ESCALA 1:20

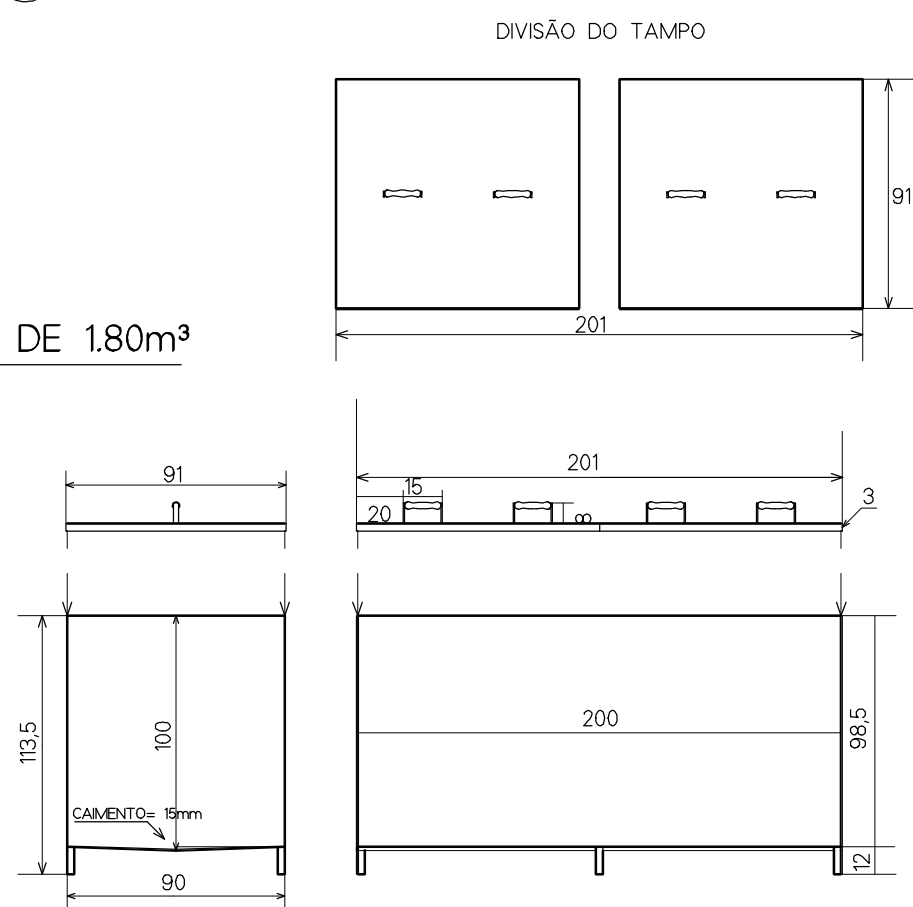


6 VISTA FRONTAL  
ESCALA 1:20



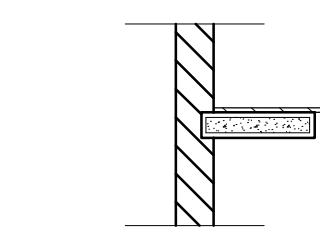
7 CORTE AA  
ESCALA 1:20

MODELO DE 1.80m<sup>3</sup>

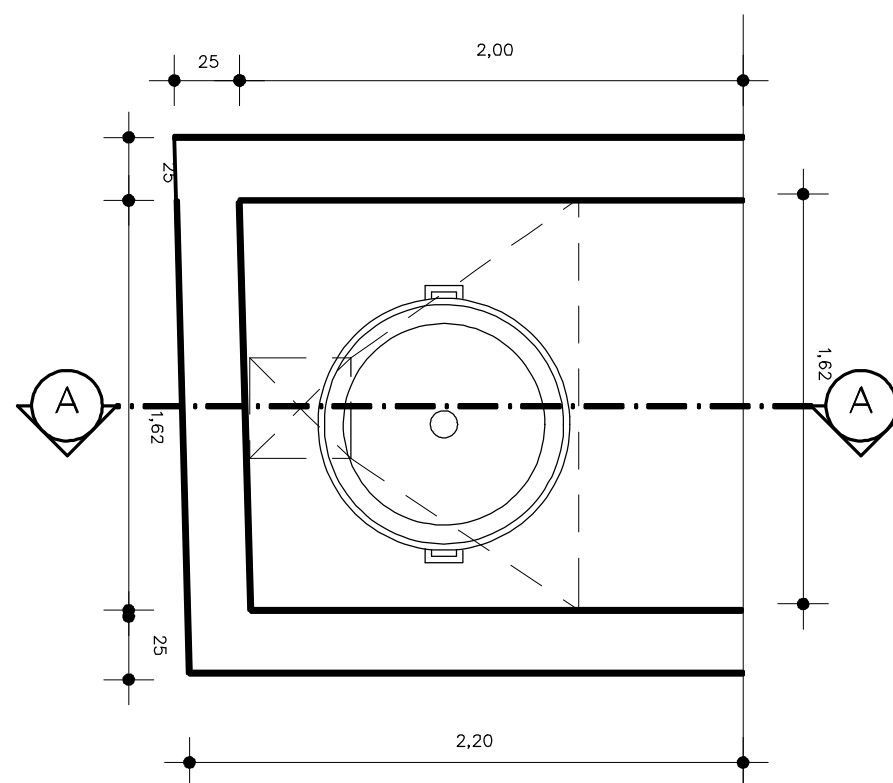


8 TANQUE INOX  
ESCALA 1:20

| TANQUES DE AÇO INOX                                | COMP | LARG | PROF | MP   | Σ     |
|--|------|------|------|------|-------|
| TQ1; TQ4 ; TQ11; TQ12;<br>TQ15 A TQ18; TQ20 E TQ21 | 2,00 | 0,90 | 1,00 | 1,80 | 23,4  |
| TQ2 E TQ3; TQ8 A TQ10;<br>TQ13 E TQ14              | 2,00 | 1,00 | 1,00 | 2,00 | 14,0  |
| TQ19   | 0,60 | 0,90 | 1,00 | 0,54 | 0,54  |
| TOTAL DOS NOVOS                                    |      |      |      |      | 37,94 |
| TOTAL DOS EXISTENTES                               |      |      |      |      | 27,97 |



9 DET. PRATELEIRAS  
ESCALA 1:20



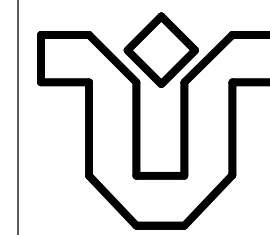
10 PLANTA BX  
ESCALA 1:20

CONSTRUIR ■  
DEMOLIR ■  
EXISTENTE □

UNIRIO

DATA NOV 7 2011

COORDENAÇÃO DE ENGENHARIA



RESP. TÉCNICO

ALUISIO CESAR  
ARQUITETO - CREA-RJ130039/D

ESCALA 1:75

DESENHO

OBRA: REFORMA DO CONJ. DE SALAS DO ANATOMICO

PRANCHA P6

ENDEREÇO DA OBRA R Frei Caneca,94 - Inst. Biomédico

ÁREA A: 266,62 m<sup>2</sup>

DETALHES